

HS-F3000TD SERIES



Materials



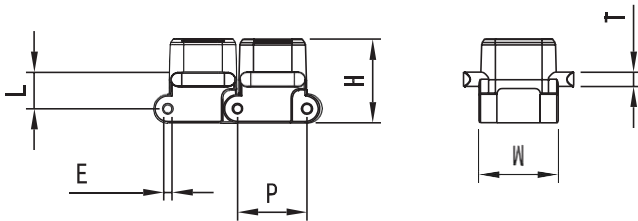
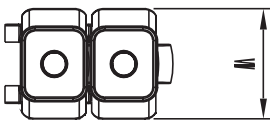
Sprockets



Applications

Plate Materials: POM-DP,POM-LF

Pin Material: Cold rolled austenitic stainless steel



Dimension	mm	inches
P	50.8	2
W	57.4	2.26
L	26.3	1.035
H	50.4	1.98
E	6	0.236
T	4	0.406
M	80	3.15
H	60.7	2.39

HS-F3000TD(Straight Running Knuckle Chain)

CHARACTERISTICS

	Width W		Working Load		Radius		Reverse Radius		Weight (kg/pc)
	(mm)	(inch)	N(21°C)	lbf(21°C)	(mm)	(inch)	(mm)	(inch)	
HS-F3000TD	57.4	2.26	3100	698	-	-	-	-	0.21