

HS-F3000B SERIES



Materials



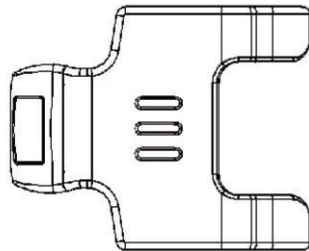
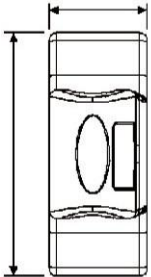
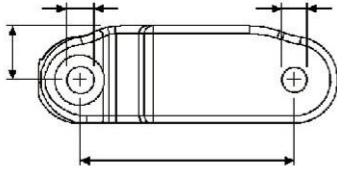
Sprockets



Applications

Plate Materials: POM-DP,POM-LF

Pin Material: Cold rolled austenitic stainless steel



Dimension	mm	inches
P	50.4	1.984
F	12.7	0.500
W	57.4	2.260
H	23.0	0.905
E1	6.5	0.256
E2	6.0	0.236

HS-F3000 (Straight Running Knuckle Chain)

CHARACTERISTICS

	Width W		Working Load		Radius		Reverse Radius		Weight (kg/m)
	(mm)	(inch)	N(21°C)	lbf(21°C)	(mm)	(inch)	(mm)	(inch)	
HS-F3000B	57.4	2.26	3100	698	-	-	-	-	1.32