

HS-F3000B-TAB SERIES



Materials



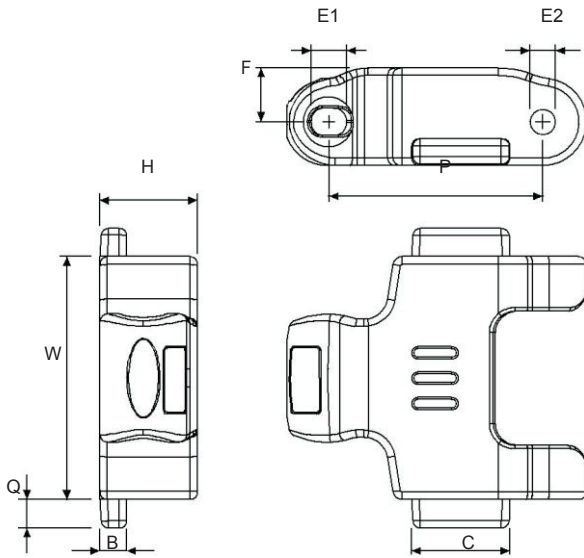
Sprockets



Applications

Plate Materials: POM-DP,POM-LF

Pin Material: Cold rolled austenitic stainless steel



Dimension	mm	inches
P	50.6	1.992
F	12.7	0.500
W	57.4	2.260
H	23.0	0.905
Q	6.7	0.263
B	6.3	0.248
C	23.2	0.913
E1	8.3	0.327
E2	6.0	0.236

HS-F3000 (Side Flexing Knuckle Chain)

CHARACTERISTICS

	Width W		Working Load		Radius		Reverse Radius		Weight (kg/m)
	(mm)	(inch)	N(21°C)	lbf(21°C)	(mm)	(inch)	(mm)	(inch)	
HS-F3000B-TAB	57.4	2.26	3100	698	406	16	-	-	1.36