

HS-881TAB SERIES



Materials



Sprockets

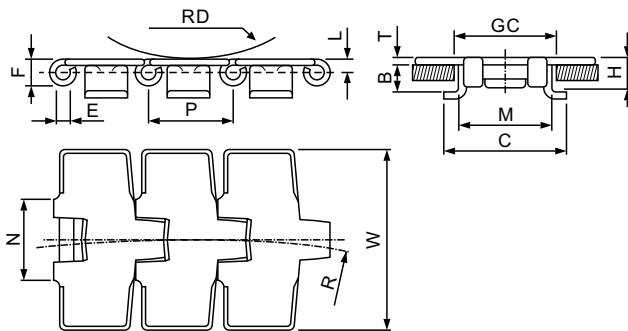


Applications

Plate Materials: S, SS

Pin Material: Case hardened seetl(for carbon steel chains)

Cold rolled austenitic stainless steel(for stainless steel chains)



| Dimension | mm | inches |
|--------------|------|--------|
| P | 38.1 | 1.500 |
| T | 3.0 | 0.118 |
| M | 43.0 | 1.693 |
| N | 38.3 | 1.508 |
| C | 56.0 | 2.205 |
| L | 6.4 | 0.252 |
| H | 19.3 | 0.760 |
| E | 6.4 | 0.250 |
| B | 12.8 | 0.504 |
| F | 13.0 | 0.512 |
| RD | 75.0 | 2.953 |
| GC(Straight) | 46.0 | 1.811 |
| GC(Curve) | 44.5 | 1.752 |

HS-881TAB (Sideflexing-Tab)

CHARACTERISTICS

| | Width W | | Working Load | | Sideflexing Radius | | Weight (kg/m) |
|---------------------|---------|--------|--------------|-----------|--------------------|--------|------------------|
| | (mm) | (inch) | N(21°C) | lbs(21°C) | (mm) | (inch) | |
| HS-S 881TAB K3 1/4 | 82.6 | 3.25 | 11600 | 2610 | 457.2 | 18 | 2.96 |
| HS-S 881TAB K4 1/2 | 114.3 | 4.50 | 11600 | 2610 | 609.6 | 24 | 3.60 |
| HS-S 881TAB K7 1/2 | 190.5 | 7.50 | 11600 | 2610 | 609.6 | 24 | 5.00 |
| HS-SS 881TAB K3 1/4 | 82.6 | 3.25 | 5600 | 1260 | 457.2 | 18 | 2.99 |
| HS-SS 881TAB K4 1/2 | 114.3 | 4.50 | 5600 | 1260 | 609.6 | 24 | 3.63 |
| HS-SS 881TAB K7 1/2 | 190.5 | 7.50 | 5600 | 1260 | 609.6 | 24 | 5.05 |