

HS-880TAB SERIES



Materials



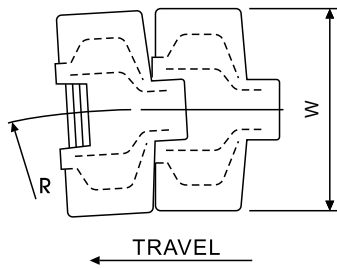
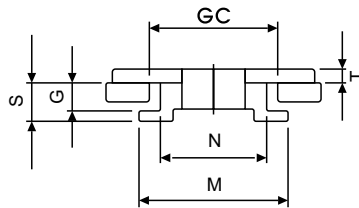
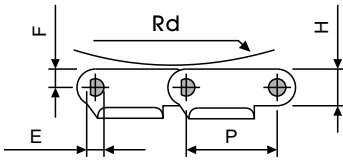
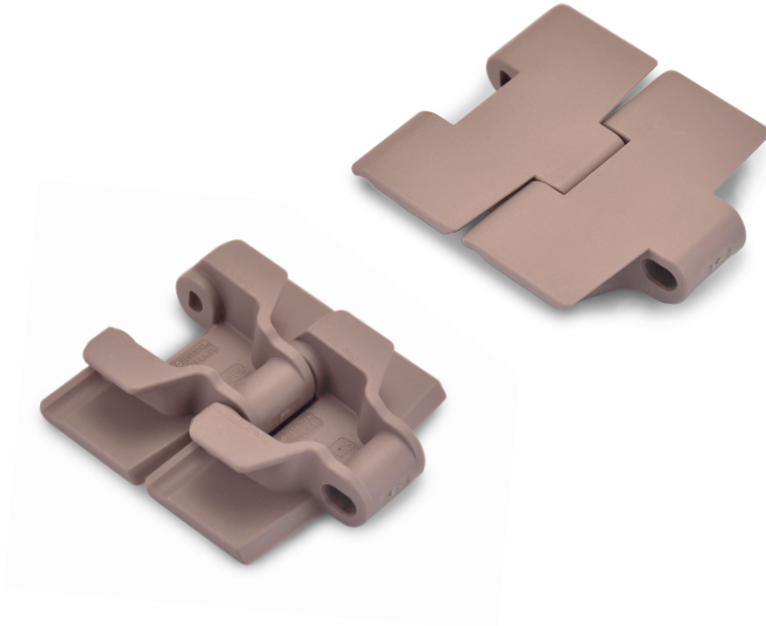
Sprockets



Applications

Plate Materials: POM-DP, POM-LF

Pin Material: Cold rolled austenitic stainless steel



Dimension	mm	inches
P	38.1	1.500
R	400.0	15.748
W	-	-
H	20.0	0.787
T	4.0	0.157
F	7.6	0.300
E	7.1	0.280
M	61.1	2.406
N	42.9	1.689
S	16.0	0.630
G	11.5	0.453
RD	40.0	1.575
GC(Straight)	46.0	1.811
GC(Curve)	44.2	1.740

HS-880TAB (Side Flexing Plastic Chain)

CHARACTERISTICS

	Width W		Working Load		Radius		Reverse Radius		Weight (kg/m)
	(mm)	(inch)	N(21°C)	lbs(21°C)	(mm)	(inch)	(mm)	(inch)	
HS-880TAB-K325	82.5	3.25	2100	472	457	18.00	40	1.57	0.94
HS-880TAB-K450	114.5	4.50	2100	472	500	19.69	40	1.57	1.08
HS-880TAB-K600	152.4	6.00	2100	472	560	22.05	40	1.57	1.32
HS-880TAB-K750	190.5	7.50	2100	472	610	24.00	40	1.57	1.35