

HS-880TAB BO SERIES



Materials



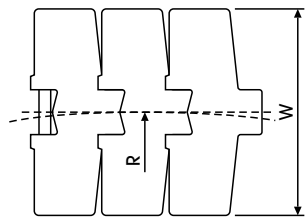
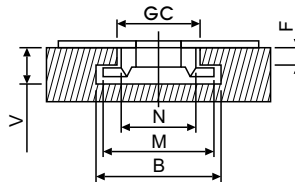
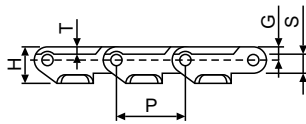
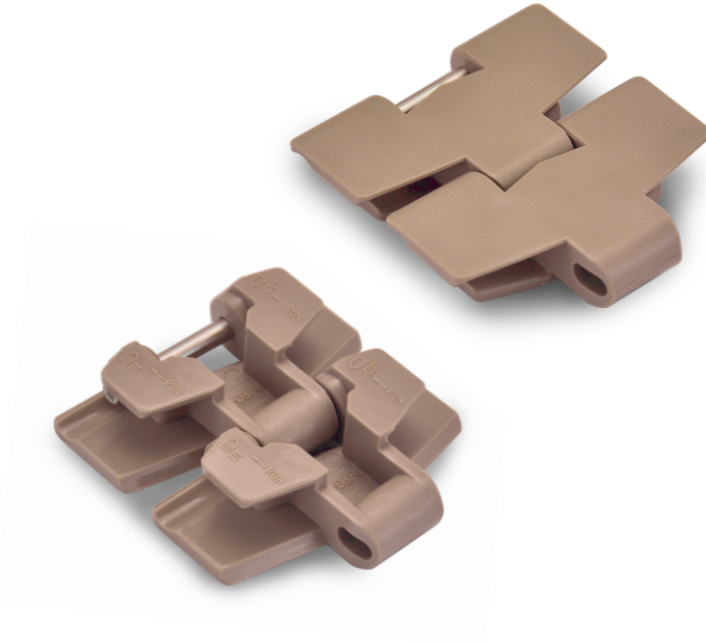
Sprockets



Applications

Plate Materials: POM-DP,POM-LF

Pin Material: Cold rolled austenitic stainless steel



Dimension	mm	inches
P	38.1	1.500
R	190.0	7.480
W	-	-
H	20.0	0.787
T	4.0	0.157
F	10.0	0.394
N	43.0	1.693
M	62.0	2.441
S	12.0	0.472
G	7.6	0.299
B	70.0	2.756
V	18.0	0.709
GC(Straight)	46.0	1.811
GC(Curve)	44.2	1.740

HS-880TAB BO (Side Flexing Plastic Chain)

CHARACTERISTICS

	Width W		Working Load		Radius		Reverse Radius		Weight (kg/m)
	(mm)	(inch)	N(21°C)	lbs(21°C)	(mm)	(inch)	(mm)	(inch)	
HS-880TAB BO-K325	82.5	3.25	1680	378	200	7.87	40	1.57	0.94
HS-880TAB BO-K450	114.3	4.50	1680	378	200	7.87	40	1.57	1.11