

HS-878 BO SERIES



Materials



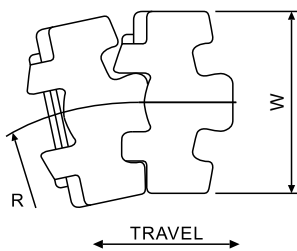
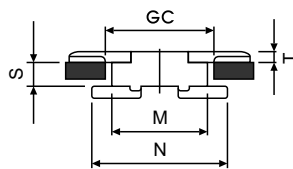
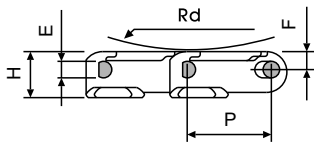
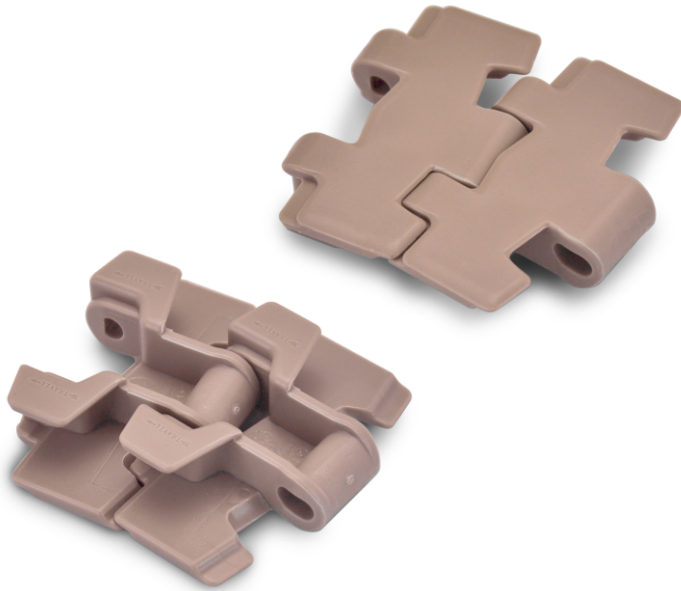
Sprockets
102/103/104



Applications

Plate Materials: POM-DP,POM-LF

Pin Material: Cold rolled austenitic stainless steel



Dimension	mm	inches
P	38.1	1.500
W	-	-
E	7.1	0.280
T	4.8	0.157
F	8.4	0.331
N	61.5	2.421
M	42.9	1.689
S	11.5	0.453
H	20.8	0.819
R	190.0	7.480
RD	40.0	1.575
GC(Straight)	46.0	1.811
GC(Curve)	44.2	1.740

HS-878 BO (Side Flexing Plastic Chain)

CHARACTERISTICS

	Width W		Working Load		Radius		Reverse Radius		Weight (kg/m)
	(mm)	(inch)	N(21°C)	lbs(21°C)	(mm)	(inch)	(mm)	(inch)	
HS-878 BO-K325	82.5	3.25	2100	472	190	7.48	40	1.575	1.08
HS-878 BO-K450	114.3	4.50	2100	472	190	7.48	40	1.575	1.20