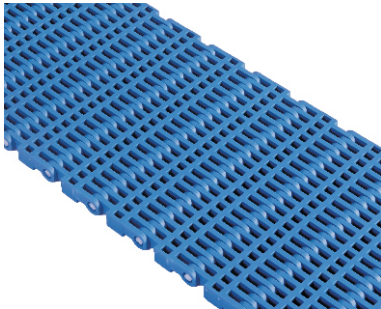
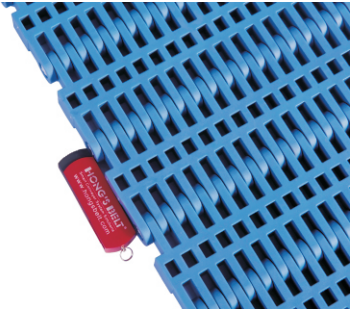
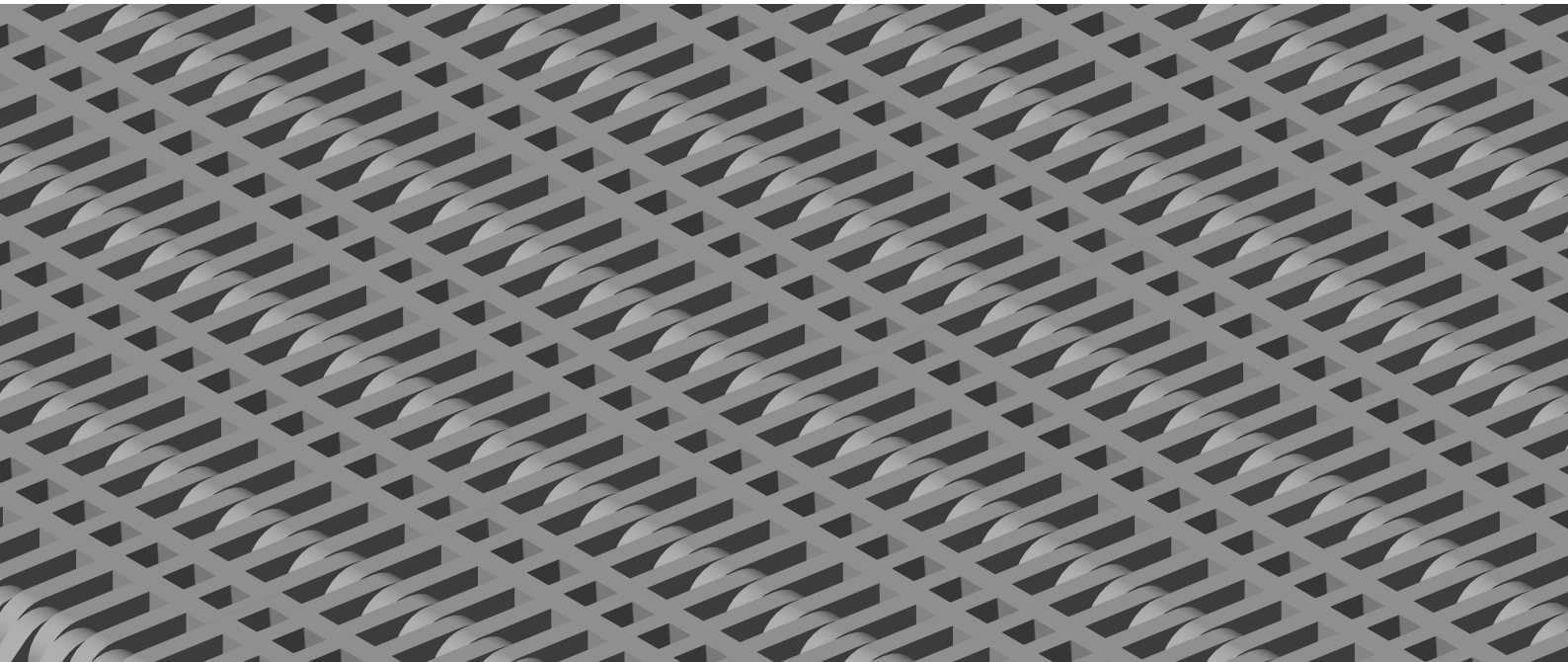


HS-3600B Technical Data Sheet



<p>Pitch: 50mm Minimum Width: 200mm Open Area: 27% Approved: FDA Rod: Ø 5.8mm Flight: Yes Side Guard: No Curve: No</p>	
---	--

Data

Belt Material	Belt Strength			Temperature		Belt Weight (Kg/M ²)
	Straight		Curve	°C (min.)	°C (max.)	
	Kg/M(BW)	N/M(BW)				
Polypropylene	2795	27950	--	1	100	8.0
Polyethylene	1840	18400	--	-60	60	8.0
Acetal	4200	42000	--	-40	80	12.0

BW – Belt Width AS - Anti-Static

Color Table

Polypropylene					Polyethylene					Acetal					Nylon				
W	G	N	DB	B	W	G	N	DB	B	W	G	N	DB	B	W	G	N	DB	B
●	●						●			●				●					

W-White, G-Gray, N-Nature, DB-Dark brown, B-Blue (For more information of belt color, pls consult our sales team)

Friction Table

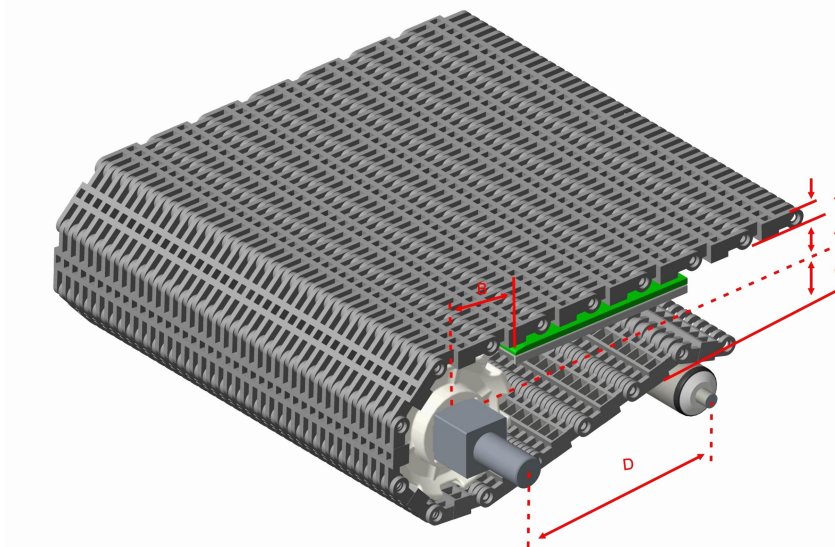
Belt Material	Friction Wear strips & Products							
	UHMW	HDPE	Steel	Glass	SUS	Plastic	Cardboard	Aluminum
Polypropylene	0.32	0.24	0.15	0.09	0.13	0.08	0.15	0.25
Polyethylene	0.13	0.11	0.26	0.19	0.31	0.16	0.21	0.41
Acetal	0.11	0.09	0.27	0.16	0.26	0.15	0.19	0.28
Nylon	0.18	0.13	0.25	0.16	0.26	0.16	0.19	0.27

SUS – Stainless Steel

Equivalent type with other Brand

Brand Name	Intralox	Habasit	UNI	Rexnord	MCC	ScanBelt
Series & Type	--	--	--	--	--	S.50-100

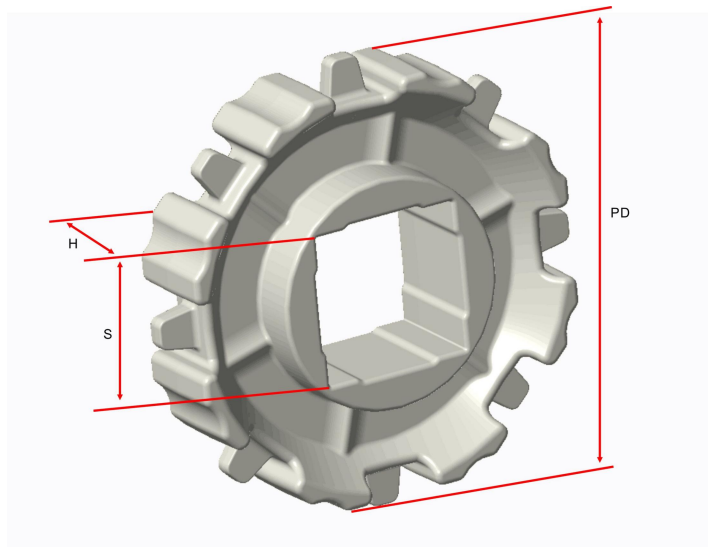
The above content is only for reference.



Conveyor Frame Dimensions

Unit : mm

No. Teeth	A (Min.)	B (Min.)	C (Max.)	D (Min.)	T
8	54.6	72.6	50.6	200	16
10	70.5	88.5	66.5	200	
12	86.6	104.6	82.6	200	



Sprocket Dimensions

Unit: mm

No. Teeth	PD	OD	S	D	H	K
8	130.66	125.2	40	--	33.8	--
10	161.80	157.0	40	--	33.8	--
12	193.19	189.2	38.1/40	30/35	33.8	8X8