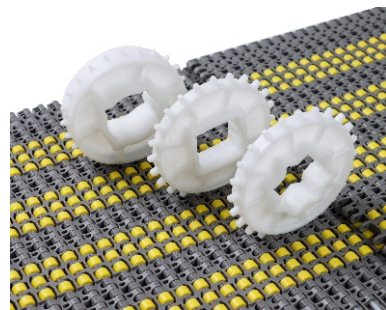
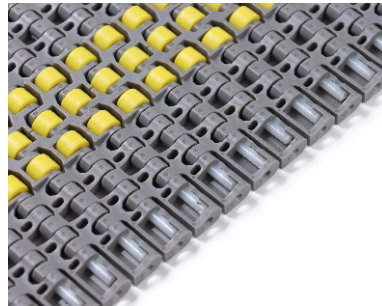
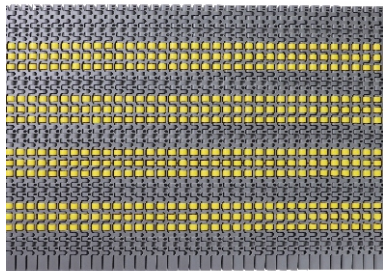
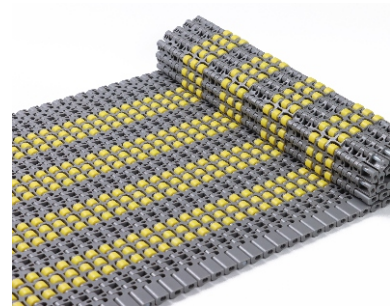
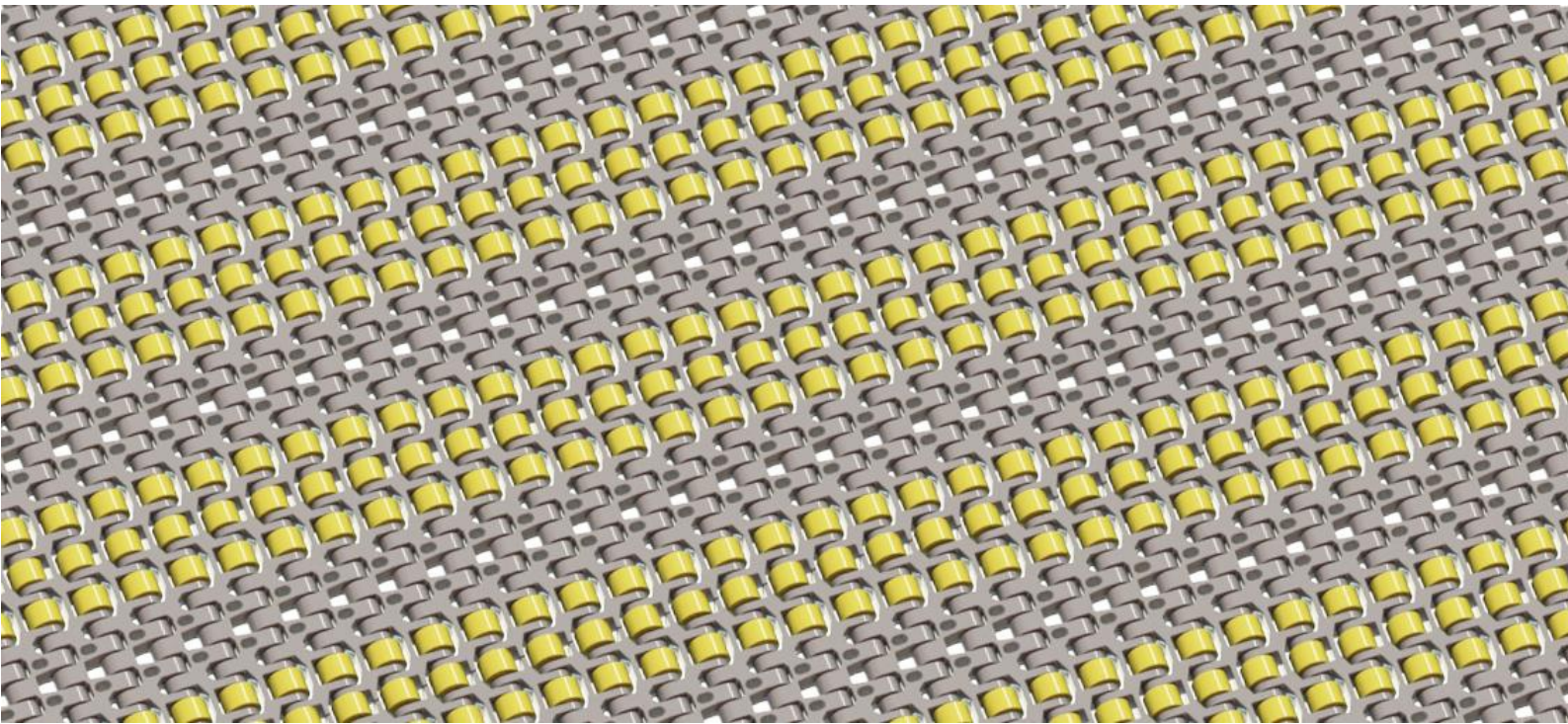


## HS-3200C Technical Data Sheet



<p>Pitch: 15.2mm                  Minimum Width: 227mm                  Open Area: 13%                  Approved: FDA                  Rod: Ø 4.5mm                  Flight: No                  Side Guard: No                  Curve : No</p>	
-----------------------------------------------------------------------------------------------------------------------------------------------------------------------------------------------------------------------------------------------------------------------------	--

### Data

Belt Material	Belt Strength			Temperature		Belt Weight
	Straight		Curve	°C (min.)	°C (max.)	(Kg/M <sup>2</sup> )
	Kg/M(BW)	N/M(BW)				
Acetal	1490	14900	--	-46	93	8.3

**BW – Belt Width**

### Color Table

Polypropylene					Polyethylene					Acetal					Nylon				
W	G	N	DB	B	W	G	N	DB	B	W	G	N	DB	B	W	G	N	DB	B

W-White, G-Gray, N-Nature, DB-Dark brown, B-Blue (For more information of belt color, pls consult our sales team)

### Friction Table

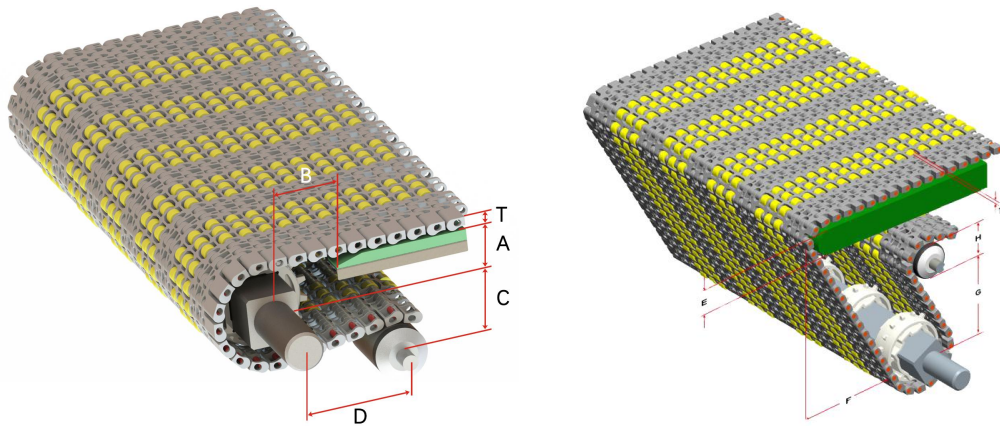
Belt Material	Friction Wear strips & Products							
	UHMW	HDPE	Steel	Glass	SUS	Plastic	Cardboard	Aluminum
Polypropylene	0.32	0.24	0.15	0.09	0.13	0.08	0.15	0.25
Polyethylene	0.13	0.11	0.26	0.19	0.31	0.16	0.21	0.41
Acetal	0.11	0.09	0.27	0.16	0.26	0.15	0.19	0.28
Nylon	0.18	0.13	0.25	0.16	0.26	0.16	0.19	0.27

SUS – Stainless Steel

### Equivalent type with other Brand

Brand Name	Intralox	Habasit	UNI	Rexnord	MCC	ScanBelt
Series & Type	S1000 Insert Roller	--	--	--	--	--

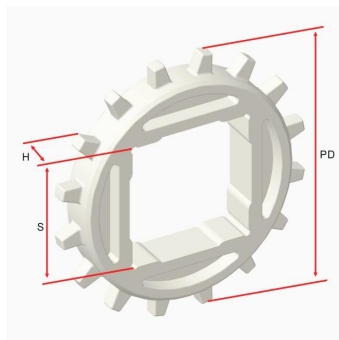
The above content is only for reference.



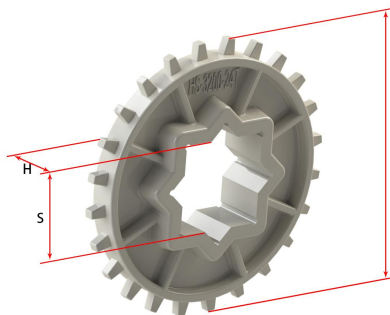
## Conveyor Frame Dimensions

Unit : mm

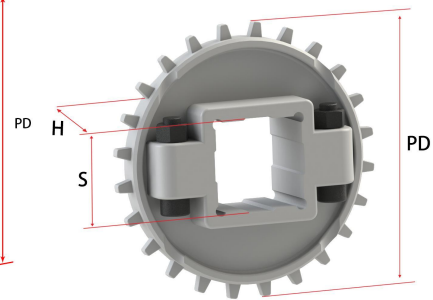
No. Teeth	A ( Min.)	B ( Min.)	C ( Max.)	D ( Min.)	E ( Min.)	H ( Min.)	T	T1
16	36	50.5	35.5	150	Ø 25	Ø 60	9.0	1.25
24 / 24-Split	56.7	71.2	56.2	150	Ø 25	Ø 60		
32	76.2	90.7	75.7	200	Ø 25	Ø 60		



16T



24T, 32T



24T-Split

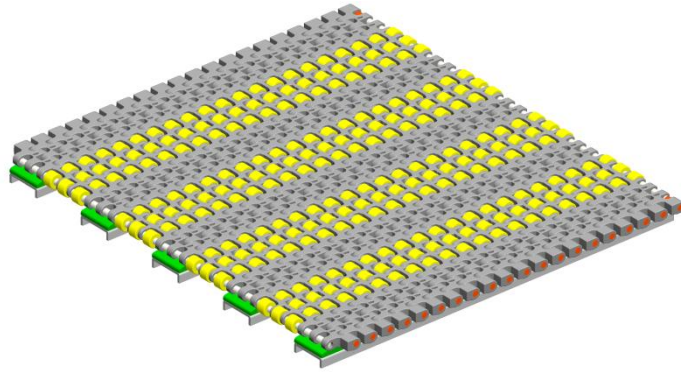
## Sprocket Dimensions

Unit: mm

No. Teeth	PD	OD	S	D	H	K
16	77.91	81	38.1/40	--	12.7	--
24	116.45	122.4	38.1/40/60	25.4/30/38.1	24.5	6.35X3.17
24-Split	116.45	121	38.1/40	--	38	--
32	155.08	161.4	38.1/40	25.4	24.5	6.35X3.17

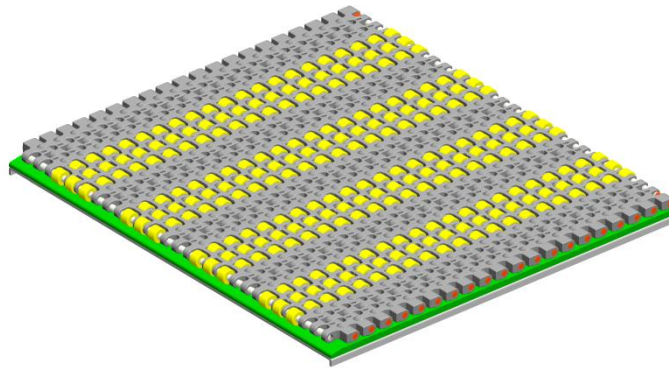
## Support Mode of Insert Roller

### Accumulation



Wear Strips are placed between rollers for accumulation

### Multi-Speed



Wear Strips are placed under the rollers and the speed of products on the belt will be 2 times of the belt speed.