

## HS-1050 SERIES



Materials



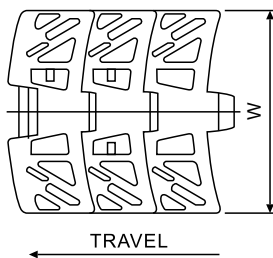
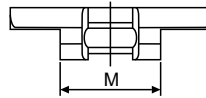
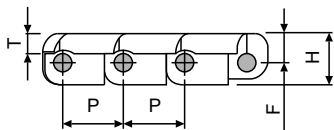
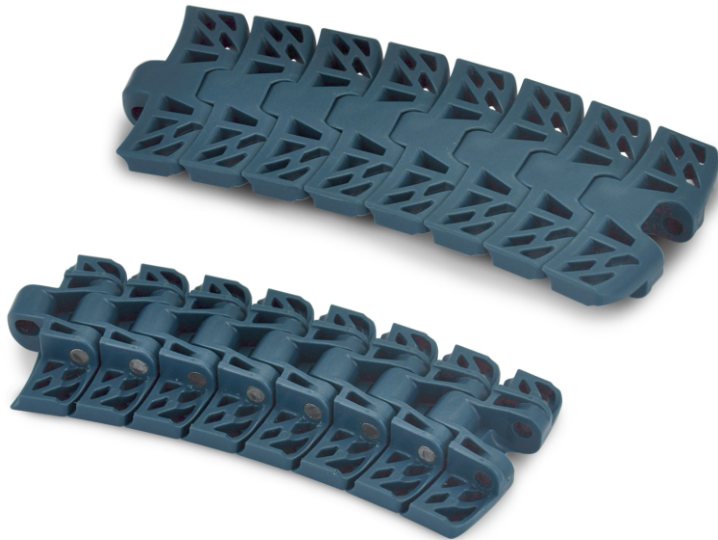
Sprockets



Applications

**Plate Materials:** POM-DP,POM-LF

**Pin Material:** Cold rolled austenitic stainless steel



Dimension	mm	inches
P	25.4	1.000
W	83.8	3.300
T	8.7	0.343
F	12.2	0.480
M	42.2	1.661
H	21.1	0.831

### HS-1050 (Side Flexing Plastic Chain)

#### CHARACTERISTICS

	Width W		Working Load		Radius		Reverse Radius		Weight (kg/m)
	(mm)	(inch)	N(21°C)	lbs(21°C)	(mm)	(inch)	(mm)	(inch)	
HS-1050-K330	83.8	3.30	1650	370	500	19.69	130	5.12	1.54